



# Olympian III

User Manual

Operational Instructions & Specifications

# Olympian III

User Manual

Operational Instructions & Specifications

Edition 6

**CHAPMAN**

## Chapman/Leonard Certified Locations

### Main Office

12950 Raymer Street,  
North Hollywood, CA 91605

#### Toll Free:

(888) 883-6559  
(818) 764-6726

#### FAX:

Rentals: (818) 764-6730  
Leasing: (818) 764-4347  
Accounting: (818) 764-9391

### Georgia

2000 McFarland 400 Blvd.  
Alpharetta, GA 30004

#### Toll Free:

(888) 758-4826

#### FAX:

(678) 583-1858

### UK & Europe

Chapman Leonard Studio Equipment, Ltd.  
Unit 2  
North Orbital Commercial Park  
Napsbury Lane, St. Albans, Herts  
England AL1 1XB

#### Phone:

+44 1 727 838424

#### FAX:

+44 1 727 852241

### Louisiana

668 Distributors Row Suite E  
Elmwood Business Park  
New Orleans, LA 70123

#### Toll Free:

(888) 758-4826  
(504) 731-6050

#### FAX:

(504) 731-6051

### Texas

1901 E. 51st Street  
Austin, Texas 78723

#### Toll Free:

(888) 758-4826  
(512) 473-0084

#### FAX:

(512) 473-0042

## **Olympian III User Manual**

Copyright © 2023 Chapman/Leonard  
Studio Equipment, Inc

All rights reserved. No part of this manual  
may be reproduced or electronically  
transmitted without the written permission  
of Chapman/Leonard Studio Equipment, Inc.

The Operator should be qualified to operate  
equipment as expressed in this manual.

For assistance please call our 24-hour  
Customer Service.

**+1 (888) 883-6559**  
**chapman-leonard.com**

---

## Contents

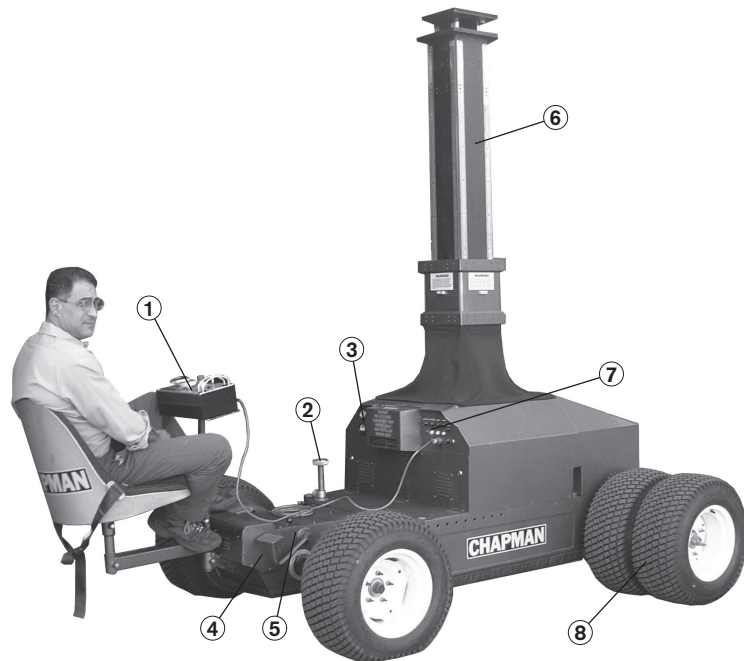
Overview	6
Safety Features	7
Features and Specifications	8
Dimensions	9
Start Up Procedure	10
Features	11
Installing the Platform	12
Using the Platform	15
The Lenny Arm	16
Batteries and Charging System	17
Knobby Tires Installation	19
Shipping and Rental Return	20

---

## Overview

The Olympian III is an electric powered, remote controlled mobile base. It can be used with a variety of crane arms and platforms and for a variety of camera setups. Its wide wheel base makes it ideal for use on a golf course or the sidelines of a football game. It can be equipped with a generator that is whisper quiet for charging the batteries, or plug it into a standard electrical outlet.

- 1 Driving Controls
- 2 Column Control
- 3 Manual Leveling Controls
- 4 Brakes
- 5 Brake Locks
- 6 Auto Leveling Column
- 7 Power Controls
- 8 Turf Knobby Tires



## Safety Features

### Olympian III

The following are recommended uses for the Olympian III:

**DO NOT** engage the auto leveling feature when traveling at high speeds.

**DO** check the batteries every day. Use a hydrometer to check the specific gravity. Fill each cell to within 1/8 inch of top of neck. Only use distilled water to top off batteries.

**DO** charge the vehicle batteries at night.

**DO NOT** charge while driving.

## WARNING!

It is **NOT** Permitted and is Unlawful to Operate this Equipment within 10 feet of High-Voltage Line of 50,000 Volts or Less.

For Minimum Clearances of High-Voltage Line in excess of 50,000 Volts, see California Code of Regulations, Title 8, Article 37, High-Voltage Electrical Safety Orders.

Source Title 8, California Code of Regulations, Subchapter 5, Group 2, Article 37, §2946, 29 Code of Federal Regulations 1926.451 (F)(6)

Nominal Voltage	Minimum Required (Feet)	Clearance (Meters)
600 up to 50,000	10	3
Over 50,000 to 75,000	11	3.4
Over 75,000 to 125,000	13	4
Over 125,000 to 175,000	15	4.6
Over 175,000 to 250,000	17	4.6
Over 250,000 to 370,000	21	6.4
Over 370,000 to 550,000	27	8.2
Over 550,000 to 1,000,000	42	12.8

## Olympian

### Features & Specifications

#### Features

1. Can carry Crane Arms up to 4,000 lb. (1,818 kg) in Phase One Mode and Arms up to 2,000 lb. (909 kg) in Phase Two Mode.
2. Provides silent AC/DC Power for silent operation.
3. Charging System operates on 110v or can be setup for 220v.
4. Tires come in your choice of Knobby, Pneumatic or Solid Tires.
5. Provides adequate ground clearance, allowing use over most terrain.
6. Self-Leveling Center Post.
7. Programmable via computer link.
8. 36v System will give surprising performance and acceleration.
9. Platform side boards, monitor platform and padding are available.
10. Aluminum Track available upon request.
11. Hydraulic chassis and parking brake.

#### Specifications

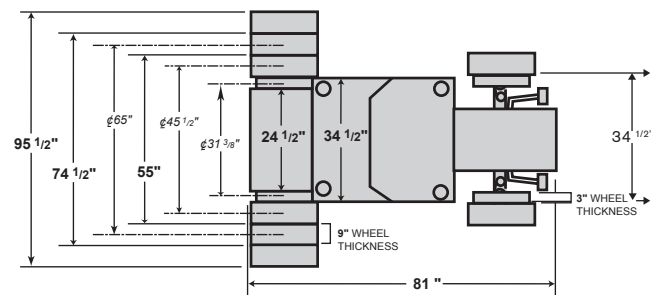
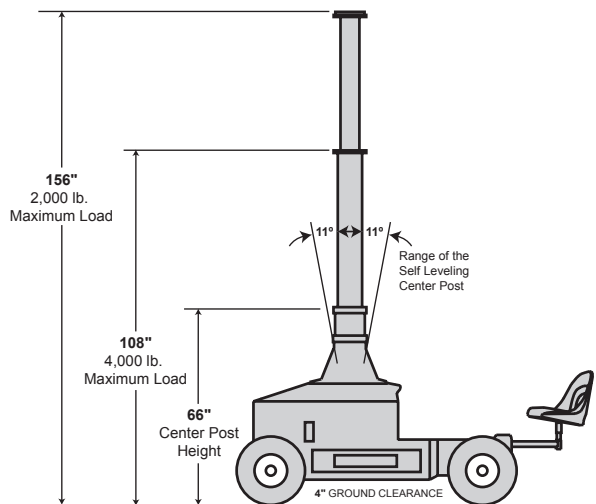
Maximum Payload - Stage One	4,000 lb.	1,818 kg
Maximum Payload - Stage Two	2,000 lb.	909 kg
Maximum Height - Stage One	9 ft.	2.74 m
Maximum Height - Stage Two	13 ft.	3.96 m
Chassis Length	81 in.	2.05 m
Maximum Wheel Width (w/ Pneumatic Wheel Setup)	95 <sup>1/2</sup> in.	2.42 m
Wheel Width (Center to Center - Solid Wheels)	31 <sup>3/8</sup> in.	79 cm
Minimum Chassis Height for Transportation (Post Down)	66 in.	1.67 m
Mounting Height (w/o Risers)	66 in.	1.67 m
Range of Motion of Self-Leveling Center Post	11°	
Ground Clearance	4 in.	10 cm
Maximum Speed of Olympian III (Fully Charged)	15 mph	24 kph
Operational Unit Weight Less Payload	3,200 lb.	1,455 kg

\* Payload includes all items (i.e. Man, Camera, Platform, Turret, Crane Arm, etc.) on Base Mount



## Olympian III

### Dimensions



## Start Up Procedure

### Configuration



Begin by turning on the **Power**, located on the chassis in front of the drivers seat. Next switch on the **Drive** and the **Steering** controls. Then switch on the **Leveling** if necessary.

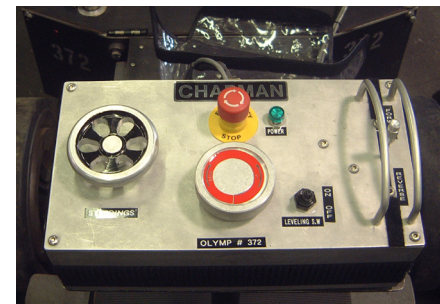
**Note:** When moving the Olympian III rapidly or over an extended distance, switch off the Automatic Leveling feature.



You may choose to **manually level** the center post using switches on the left side of the control panel.

The **Pump Switch** activates the hydraulic features of the Auto Leveling Center Post.

The **EVA** (Electronic Valve Actuator) **switch** activates the control box. Now the center post can be raised and lowered electronically. When this switch is **ON**, do not try to manually turn the control handle.



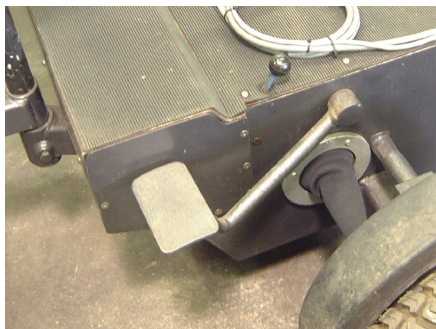
The Steering Control, Emergency Stop, Raise/Lower Center Post, Power switch for Automatic Leveling, and Forward and Reverse Movement of the vehicle can all be **accessed from the Driver's seat**.

This control box is tethered to the Olympian III and can be hand held while walking next to the vehicle.

**Note:** Push the Emergency Stop button to cut all power in the Olympian III. To cancel, **DO NOT** pull up on the button. Gently twist the button clockwise and it will pop up.

## Features

### Configuration



Two **Brake** pedals can be reached from the driver's seat on the Olympian III. They may also be locked in place by pushing down on the **Brake Lock** knob.



Charging and monitoring the batteries can be done at the left rear wheel of the Olympian III. Check the batteries every day and make sure that the water level in each cell remains within 1/8" from the top.

**Plug in the charger every night.**

**Warning!**  
**DO NOT drive while charging.**



The center post column can be raised and lowered by turning the Control Handle at the left rear of the Olympian III.

**Warning!**  
**DO NOT use this Control Handle if the EVA Switch is ON.**

## Installing the Platform Assembly



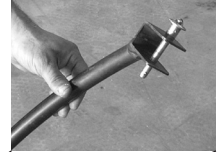
The center section of the platform is already mounted on the Olympian III when it arrives on the set. The two side pieces that complete the platform's circle are attached by a quick release pin on each side of the pedestal. The struts fit into recesses in the main platform deck to secure it in place and provide the Olympian III a narrow profile during transport.



Align the support struts to the center section of the platform and slide into place.



A quick release pin secures the section to the center section of the platform. The quick release pin used for securing the section to the pedestal may be stored in the hole next to the retaining quick release pin.



Attach the four single rods around the platform to begin building the safety railing.



Attach the three quarter circle sections of the safety railing.



The fourth quarter section of the safety railing is placed to the rear of the Olympian III. It has a quick release pin at one end to allow the cameraman to mount the platform without having to climb over the railing.



The top railing is made of two half circles. Either side may be eliminated from the assembly of the safety railing. This gives the camera an unobstructed view of the action or the crane arm a greater degree of movement.



When the safety railing is securely in place, the cameraman can climb onto the platform by detaching the lower railing at the quick release pin. Be sure that the quick release pin is reattached securely.



The final step in assembling the platform is attaching the safety harness. **Every person on the platform MUST be attached to the pedestal with a safety harness.** Even with the railing in place.



## Using the Platform

The Olympian III is ideal for sporting events. Using electrical power, the Olympian III is both quick and quiet. In this photo at a golf tournament, you will notice the Olympian III is parked on a slope. The automatic leveling feature insures that the platform remains perfectly level.

When moving to a new location, the platform should be lowered. When moving up or down an incline, the Olympian III should be positioned to go up or down the incline directly. The operator should never move diagonally on an incline. The operator should never position the Olympian III where one side is lower. It is much safer to position the Olympian III with either the front or rear higher on the incline.



---

## The Lenny Arm

The Lenny Arm III mounted on the Olympian III Mobile Base.

**Single Man Ride Shown.**





## Batteries and Charging System

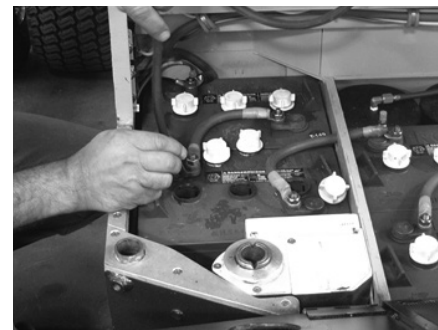
### Maintenance



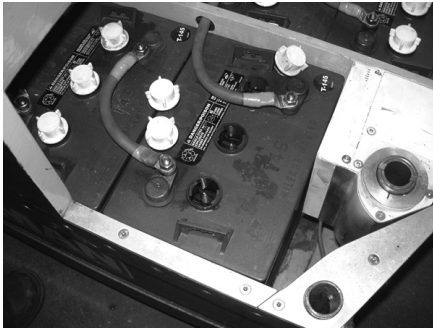
The batteries are located under the deck, in front of the driver. Lift the panels out of the way to check on their condition daily.



Use a hydrometer to check the specific gravity of each cell.



Top off each cell to within an eighth of an inch from the top of the neck using **DISTILLED WATER (ONLY)**.



Be careful that no dirt or debris is allowed to fall into the open cells of the batteries.

Check to insure that the cables are secure.



Charge the Olympian III overnight. A gauge located on the left rear of the chassis shows the rate of charging.



Use a hydrometer to check every cell in the batteries before using the Olympian III.

1325 is the maximum specific gravity allowed.

Any reading that is over 1250 is good.

## Knobby Tires

### Installation

#### Caution!

Make sure the tires are aligned. Do not strip the Center Bolt.

#### Warning!

Read All Warning Labels Before Operating



**Place** the solid tire on a ramp. **Apply Brake. Chock** opposite wheels.



While holding a Knobby Tire up against the Solid Tire, **Align** the Five Lug Nuts on the Solid Tire with the Five Holes on the Knobby Wheel.



**Wiggle** the Knobby Tire to insure that the Lug Nuts are embedded in the Five Holes. Hold the Knobby Tire against the Solid Tire by wedging your foot under the Knobby Tire. **Tighten by Hand.**



**Torque** the Center Hub Bolt to 220-250 lb. (The Lock Washer should now be completely flattened).

## Shipping & Rental Return

The customer should be sure that the equipment is properly crated for shipment. Get a signed receipt from the shipping company that will be transporting the equipment. Keep the receipt from the transport company indicating that the equipment has been shipped to **Chapman/Leonard Studio Equipment, Inc.**

When picking up or returning rental gear to Chapman/Leonard Studio Equipment, Inc., please remember that **rentals are due back by 10 a.m. at our North Hollywood facility.**

The rental bays are located on your left, immediately after entering the facility from Raymer Street. Trucks should be backed up to the bays for easier loading. If no bays are available, please talk with security guards.

All drivers should first report to the Rental Staff for paperwork. Unloading will not begin until the paperwork has been picked up and stamped. Our Rental Staff is well trained to process equipment and documents quickly and courteously. It is our intent to get you back on the road in a timely manner.

### Address

Chapman/Leonard Studio Equipment, Inc.  
12950 Raymer Street  
North Hollywood, CA 91605

### Rental Office Hours

Monday - Friday	7am - 6pm
Saturdays	8am - 12 pm





**CHAPMAN/LEONARD**  
— STUDIO EQUIPMENT INC. —