



Pedolly Pedestal

User Manual

Operational Instructions & Specifications

Pedolly Pedestal

User Manual

Operational Instructions & Specifications

Edition 11

CHAPMAN

Chapman/Leonard Certified Locations

Main Office

12950 Raymer Street,
North Hollywood, CA 91605

Toll Free:

(888) 883-6559
(818) 764-6726

FAX:

Rentals: (818) 764-6730
Leasing: (818) 764-4347
Accounting: (818) 764-9391

Florida

9460 Delegates Drive
Orlando, Florida 32837

Toll Free:

(888) 337-8243
(407) 851-3456

FAX:

(407) 855-1653

Georgia

120 Parkwest Drive #D
McDonough, GA 30253

Toll Free:

(888) 758-4826

FAX:

(678) 583-1858

New Mexico

5650 University Blvd. SE
Albuquerque, NM 87106

Toll Free:

888-758-4826

FAX:

505-227-2578

Louisiana

668 Distributors Row Suite E
Elmwood Business Park
New Orleans, LA 70123

Toll Free:

(888) 758-4826
(504) 731-6050

FAX:

(504) 731-6051

Texas

1901 E. 51st Street
Austin, Texas 78723

Toll Free:

(888) 758-4826
(512) 473-0084

FAX:

(512) 473-0042

UK & Europe

Chapman Leonard Studio Equipment, Ltd.
Unit 2
North Orbital Commercial Park
Napsbury Lane, St. Albans, Herts
England AL1 1XB

Phone:

+44 1 727 838424

FAX:

+44 1 727 852241

Pedolly Pedestal User Manual

Copyright © 2019 Chapman/Leonard
Studio Equipment, Inc

All rights reserved. No part of this manual
may be reproduced or electronically
transmitted without the written permission
of Chapman/Leonard Studio Equipment, Inc.

The Operator should be qualified to operate
equipment as expressed in this manual.

For assistance please call our 24-hour
Customer Service.

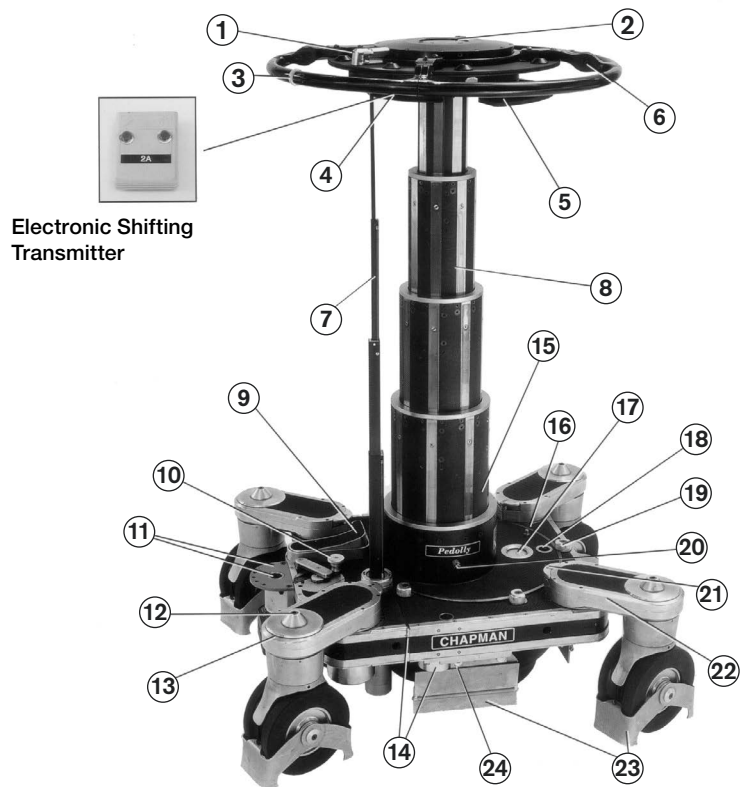
+1 (888) 883-6559
chapman-leonard.com

Contents

Features of the Pedolly	8
Specifications	10
Steering Modes	12
Brakes	13
Balancing the Payload	14
Cable Guards	15
Leg Positions	16
Aligning the Wheels	17
Accessories	18
Removing Column from the Base	19
Column Riser	22
Pedolly Tool Case	23

Features of the Pedolly

- | | | | |
|----|---|----|---|
| 1 | Steering Ring Locking Pin | 15 | Single Seal Rotating Column |
| 2 | Camera Mount | 16 | Air Filler Valve |
| 3 | Alignment Marker | 17 | Column Pressure Gauge |
| 4 | Electronic Transmitter Pad | 18 | Seat Pockets |
| 5 | Lead Weight Compartment | 19 | Cam Locks |
| 6 | Steering Ring | 20 | Column Tab Lock |
| 7 | Telescoping Steering Column | 21 | Leg Lock Pin |
| 8 | Four Stage Telescoping Lift | 22 | Chassis Leg |
| 9 | Crab/Conventional Shift Pedal | 23 | Adjustable Cable Guards (Wheel & Chassis) |
| 10 | Corrective Steering Shift Knob | 24 | Cable Guard Adjustment Screw |
| 11 | Adjustable Locking Pad & Pocket | | |
| 12 | Wheel Alignment Bolt | | |
| 13 | Wheel Alignment Marks | | |
| 14 | Split Chassis & Hydraulic
Dampening System | | |



Pedolly Pedestal

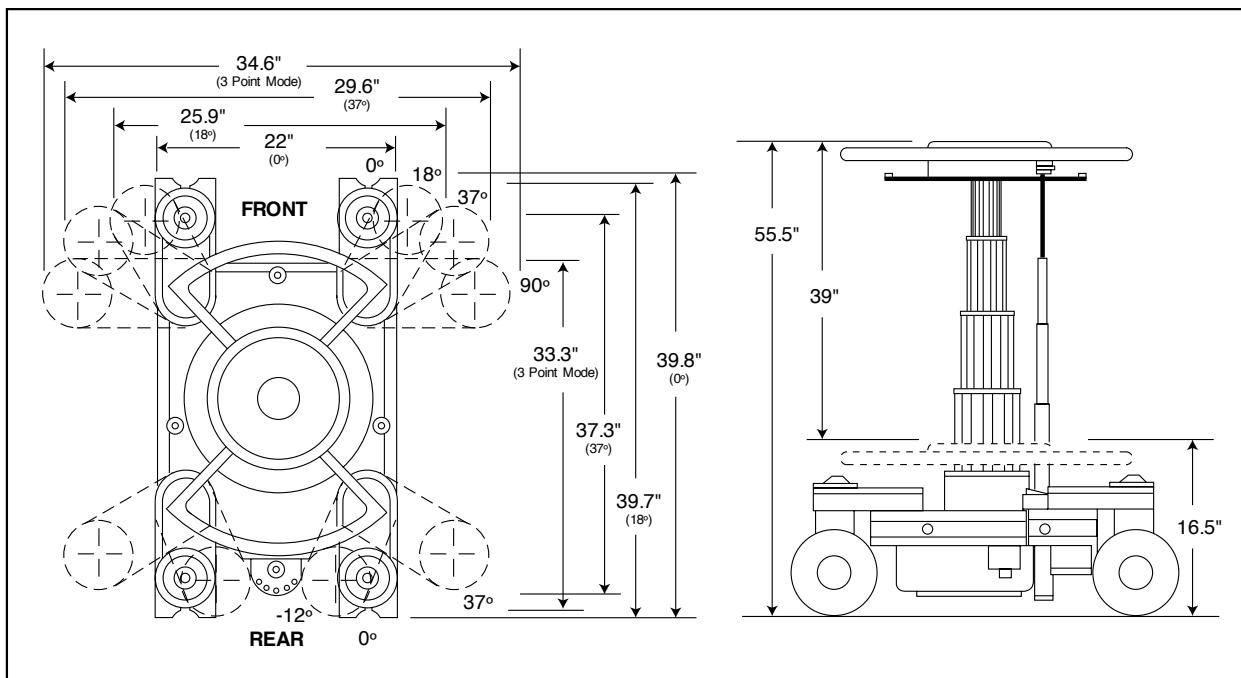
Specifications

Maximum Standard Camera Mount Height	55.5"	141 cm
Minimum Camera Mount Height	16.5"	41.5 cm
Maximum Camera Mount Height (Column without Chassis)	55"	140 cm
Minimum Camera Mount Height (Column without Chassis)	16"	40 cm
Vertical Travel	39"	99 cm
Payload Range*	20-375 lb	9-170 kg
Chassis Minimum Length (Wheels in 3 point mode)	33.3"	84.7 cm
Chassis Maximum Length (Wheels extended)	39.8"	101 cm
Chassis Width		
Legs at 0°	22"	55.9 cm
Rear Legs at 0° / Front Legs at 18°	25.9"	65.8 cm
Legs at 37°	29.6"	75.2 cm
Rear Legs at -12° / Front Legs at 90° (3 point mode)	34.6"	87.9 cm
Column Diameter (when used without chassis)	16.6"	42.2 cm
Minimum Turn Radius	27.4"	69.6 cm
Minimum Carrying Weight of Chassis	179 lb	81.4 kg
Minimum Carrying Weight of Column	170 lb	77.1 kg
Operating Unit Weight (without payload)	349 lb	158.3 kg

*Payload Includes all items (i.e. Camera Remote Head, Crane Arm, etc.) on Column.

Pedolly Pedestal
Diagram

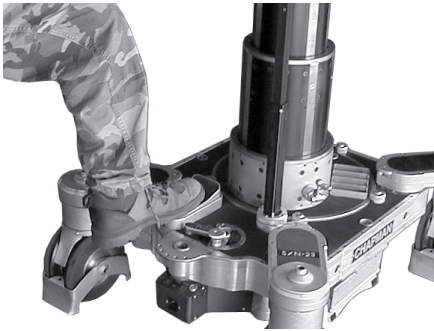
**Note: Make sure the Steering Column
Socket Head Screw is tight at the
Locking Collar.**



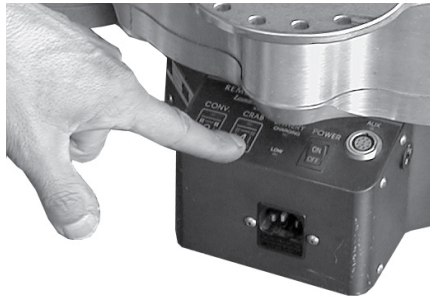
Steering Modes

Features

The Steering Mode can be changed from Crab to Conventional steering by first turning the steering wheel until all wheels are pointing straight forward. The transmission can then be shifted one of three ways:



1 By pressing the Crab / Conventional Shift Pedal.



2 By using the Electronic Shifter.



3 By using the Electronic Shifting Transmitter.

Brakes

Configuration



The Pedolly Wheel Brake Lever can be activated with your foot or hand by pushing down until the Lever remains in the locked position. The Pedolly Wheel Brake Lever can be released by applying gentle pressure upward.



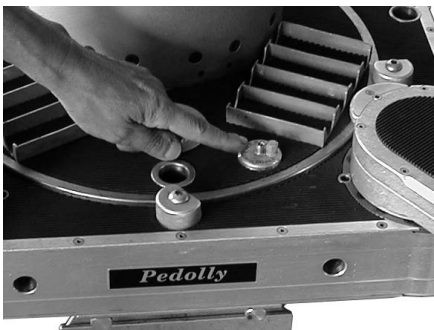
The Pedolly Column can be locked in the down position for shipping. This position is also useful when mounting the camera.

Warning!

Always check the Nitrogen Pressure Gauge before removing the Column Lift from the Pedolly Chassis to avoid possible injury or damage to the equipment. There should always be a minimum charge of 85 PSI.

Balancing the Payload

Configuration



The Nitrogen Schrader Valve is used to add sufficient pressure to balance the payload.

Before adjusting the Nitrogen charge, all trim weights should be moved from the Steering Ring Weight Trays to the Storage Weight Trays on the base.

After adding or subtracting Nitrogen, weights can be placed in the Steering Ring Weight Tray to fine balance the payload with the Nitrogen charge.



In a working situation, the Column's payload can be fine balanced to the Nitrogen charge by adding weights to the Steering Ring Weight Tray.



The unused trim weights can be stored in the Trays on the base of the Pedolly.

Cable Guards Configuration

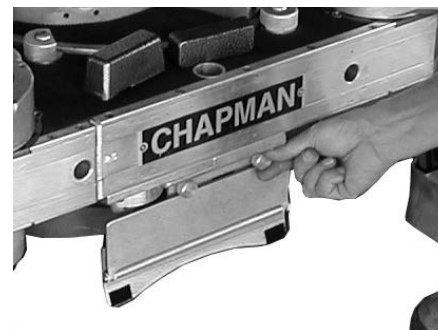


Wheel Cable Guards can be flipped upward when not in use. The height can be adjusted with a $\frac{5}{32}$ " Ball Allen Wrench.

Turning counter clockwise raises and turning clockwise lowers the minimum height of the Wheel Cable Guard to the floor.



Chassis Cable Guards can also be flipped upward.



The height of the Chassis Cable Guards can be changed by loosening the thumbscrews and adjusting within the slotted area until the desired height is achieved.

Leg Positions Configuration

The Pedolly's adjustable legs provide versatility for different applications.

Refer to specifications on page 8 for dimensions

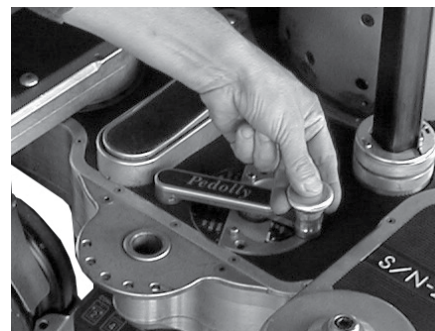


There are four basic recommended leg positions:

- 1 Rear legs at -12° / front legs at 90° .
(Three -point suspension)
- 2 All legs at 37° .
(For use on track with 24.5" centers)
- 3 Rear legs at 0° / front legs at 18° .
(Narrowest configuration while using a battery tray)
- 4 All legs at 0° .
(Narrowest configuration at 22" wide)

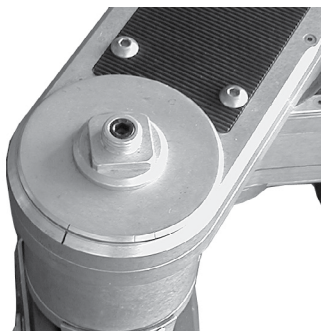


To adjust the legs, lift up the Leg Lock Pins and shift the legs to the desired position.

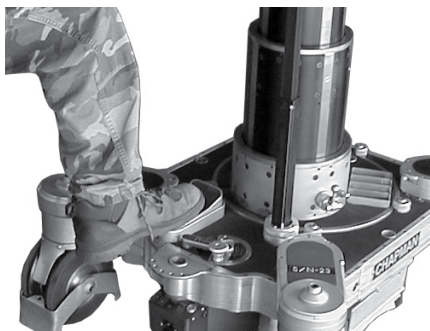


Adjust the Corrective Steering Shift Knob according to the leg configuration used.

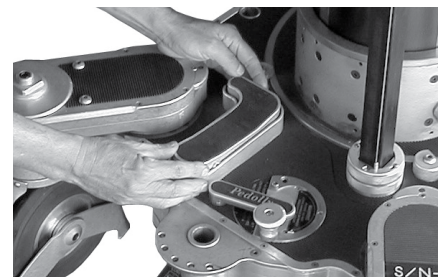
Aligning the Wheels Configuration



The Pedolly Wheel Alignment may be adjusted by first observing the Alignment Marks on the wheel caps.



- 1 Shift the steering into Crab Mode.
- 2 Turn the steering until the wheels are pointing straight forward.
- 3 Look at the Alignment Marks on the wheels. If the marks on any wheel do not line up correctly, an adjustment should be made.

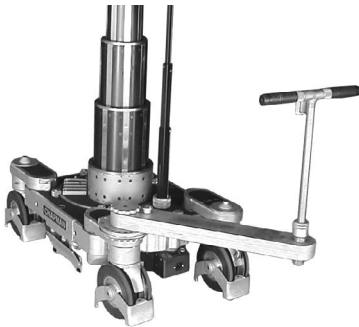


Wheel Alignment Bolt

- 4 Shift the steering half-way between Crab and Conventional modes. You will feel the Steering lock into place.
- 5 Loosen the Alignment Bolt on the unaligned wheel with the 5/16" allen wrench provided in the tool case.
- 6 Grab the wheel and move it to match up the Alignment Marks.
- 7 Tighten the Wheel Alignment Bolt.

When all wheels are aligned correctly, they will be parallel with each other.

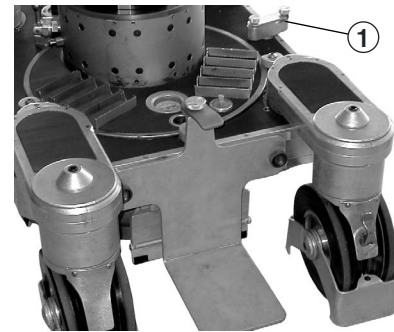
Accessories



The Pedolly Steering Handle Attachment provides Conventional Dolly Steering.

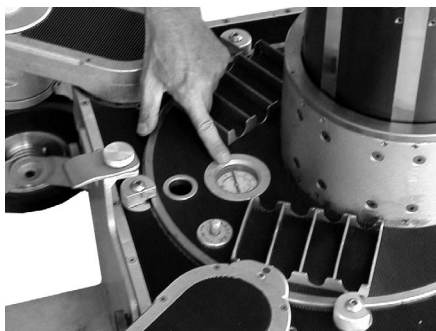


The Pedolly can be equipped with a Mitchell Adapter (3" or 6").



1 Cable Dragger

Removing the Column from the Base Assembly



Always check the Nitrogen Pressure Gauge before removing the Column Lift from the Pedolly Chassis to avoid possible injury or damage to the equipment. There should always be a minimum charge of 85 psi to maintain tension on the internal cables.



Lock the Steering Ring.



Remove the Telescoping Steering Column Tube by loosening the Socket Head Screw, turning the Locking Collar and detaching it from the Steering Ring.

Note: When operating the Pedolly, make sure the Steering Column Socket Head Screw is tight at the Locking Collar.



Release the Column Lockdown Cams. (6 places). Turn each Cam counter clockwise until it clears the edge of the Lift Column. This will facilitate proper clearance for removal.



Then turn the Retaining Collar on the Pedolly Base and lift the Steering Tube from its receptacle.



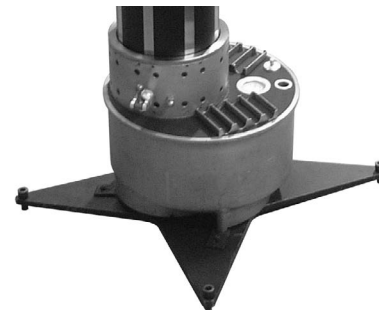
Lock the Column in the Down Position.



Lift the Column straight upward from the Pedolly Base.



The Column can be used independently of the Pedolly Base. In tight situations, such as between theater seats, the Pedolly Column is ideal. Three adjustable Leveling Bolts on the bottom of the tank can be used to level the Column when used separately from the Chassis.



Star Plate (Using the Column without the Base)

Anchor Tabs can also be fitted to the Star Plate, enabling the Column to be secured to the floor.

18" Column Riser Assembly



The Pedolly can be equipped with an 18" Column Riser. It is placed in the Pedolly Base and held by the Cam Locks.



The Column fits into the Column Riser and is held by a second set of Cam Locks.

A special extended Telescoping Steering Tube is used with the Column Riser.

The Column Riser provides added height with no loss of rigidity in the Column.

The maximum mounting height with the Column Riser is 79 ³/₄" (2 m).

Pedolly Tool Case

- 1 Telescoping Steering Tube
- 2 Turret Screws
- 3 Silicone Spray
- 4 Power Cord
- 5 Dolly Seat Riser
- 6 5/32" Ball Allen Wrench
- 7 7/32" Ball Allen Wrench
- 8 7" Seat Offset
- 9 Cable Dragger
- 10 Trim Weights
- 11 13 pcs. Allen Wrenches

Note: Keeping the column clean insures smooth precise movements while filming.

Wipe down the column with a soft cotton cloth and isopropyl alcohol.





CHAPMAN/LEONARD
— STUDIO EQUIPMENT INC. —